

OTWAYS

Walks & Waterfalls Map

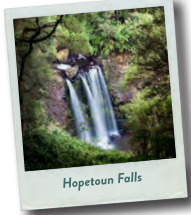
From walking trails to hidden forest retreats, the Otways is a place for adventure, romance and discovery.

Whether you go inland or hug the rugged coast, the Otways is filled with natural beauty and history.

WALKS & WATERFALLS LOOP

This stunning loop drive takes in Apollo Bay, Cape Otway, Lavers Hill, and Beech Forest.

Possible stops include the Cape Otway Lightstation, Great Otway National Park, Otway Fly Treetop Adventures, waterfalls, a Californian Redwood Forest and rainforest walks.



Hopetoun Falls

For all our walks please see the other side of this map!

VOLCANIC PLAINS LOOP

The area north of Colac is famous for its volcanic past.

Visit both east and western lookouts at Red Rock to view the vast volcanic plains, dormant craters and crater lakes of Kanawinka world listed Geopark.



Volcanic Plains

www.vicvolcanicplains.com.au

ACCREDITED VISITOR INFORMATION CENTRES

Great Ocean Road Visitor Information and Customer Service Centre

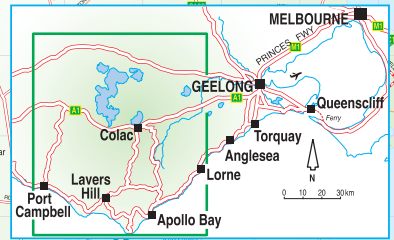
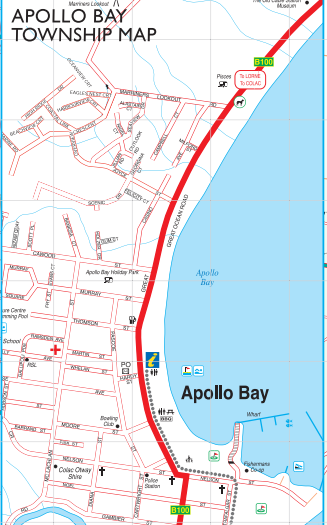
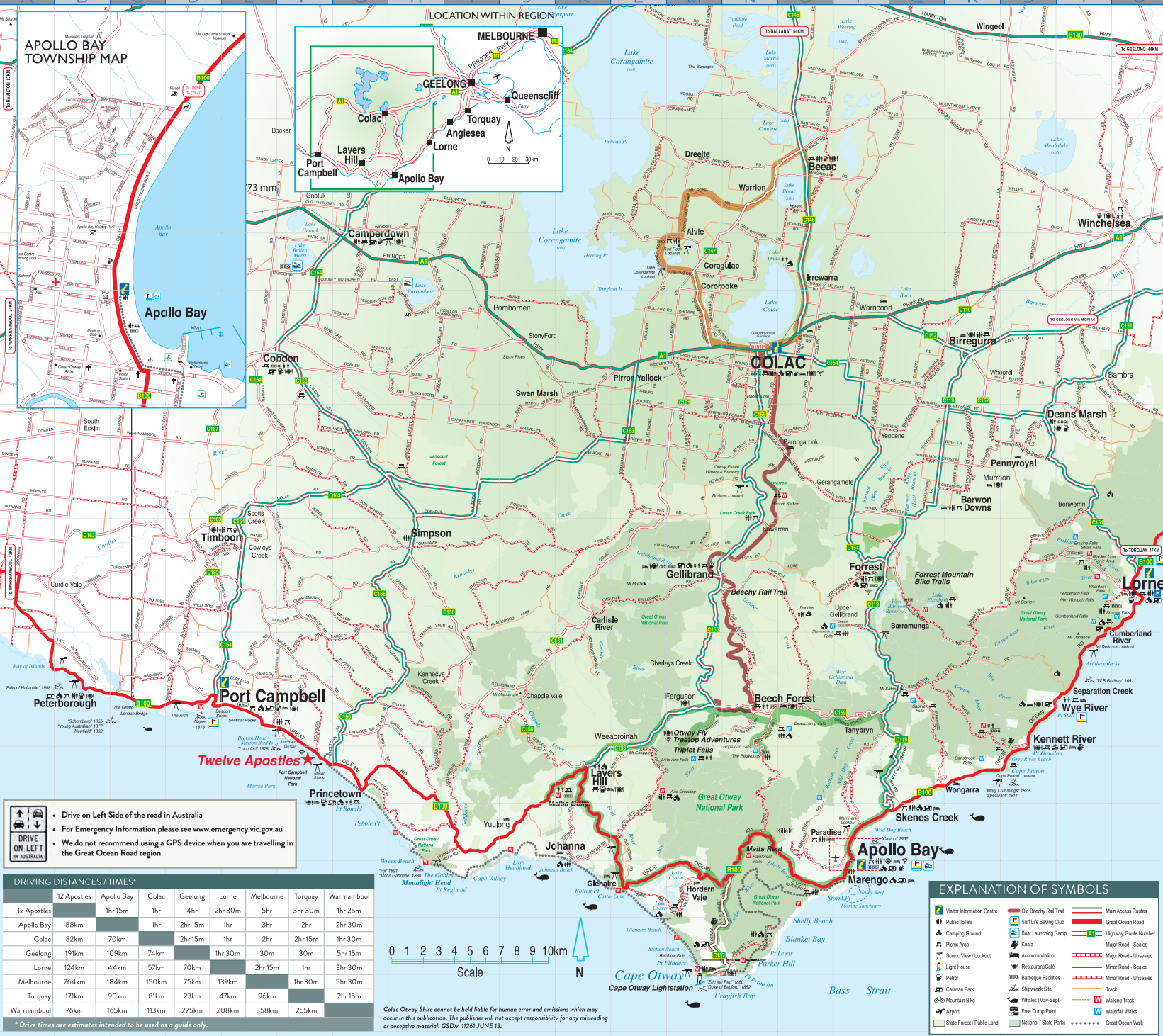
100 Great Ocean Road, Apollo Bay
Open: Fri - Mon 10am-4pm
P: 1300 OTWAYS (689 297)
E: gorvic@colacotway.vic.gov.au

Colac Visitor Information Centre

Cnr Queen & Murray Sts, Colac
Open: Fri - Mon 10am-4pm
P: 1300 OTWAYS (689 297)
E: colacvic@colacotway.vic.gov.au

Visit us: www.visitapollobay.com www.visitotways.com

Share your experience with us!
#iamapollobay #iamotways



Drive on Left Side of the road in Australia
 For Emergency Information please see www.emergency.vic.gov.au
 We do not recommend using a GPS device when you are travelling in the Great Ocean Road region

DRIVING DISTANCES / TIMES*

	12 Apostles	Apollo Bay	Colac	Geelong	Lorne	Melbourne	Torquay	Warrnambool
12 Apostles		1hr 15m	1hr	4hr	2hr 30m	5hr	3hr 30m	1hr 25m
Apollo Bay	88km		1hr	2hr 15m	1hr	3hr	2hr 30m	2hr 30m
Colac	82km	70km		2hr 15m	1hr	2hr	2hr 15m	1hr 30m
Geelong	191km	109km	74km		1hr 30m	30m	30m	5hr 15m
Lorne	124km	44km	57km	70km		2hr 15m	1hr	3hr 30m
Melbourne	264km	184km	150km	75km	139km		1hr 30m	5hr 30m
Torquay	171km	90km	81km	23km	47km	96km		2hr 15m
Warrnambool	76km	165km	113km	275km	208km	358km	255km	

* Drive times are estimates intended to be used as a guide only.

Colac Otway Shire cannot be held liable for human error and omissions which may occur in this publication. The publisher will not accept responsibility for any misleading or deceptive material. CSDM 11261 JUNE 13.

EXPLANATION OF SYMBOLS

Visitor Information Centre	Old Otway Rail Trail	Main Access Routes
Public Toilets	Great Ocean Road	Highway, Route Number
Camping Ground	Boat Launching Ramp	Major Road - Sealed
Picnic Area	Kiosk	Minor Road - Unsealed
Scenic View / Lookout	Accommodation	Minor Road - Sealed
Light House	Restaurant/Cafe	Track
Petrol	Barbecue Facilities	Walking Track
Caravan Park	Whales (May/Sept)	Waterfall
Mountain Bike	Shipwreck Site	Great Ocean Walk
Airport	Free Dump Point	
State Forest / Public Land	National / State Parks	

Walks & Waterfalls

NAME	DESCRIPTION	FEATURES & FACILITIES	Walk	Waterfalls DIFFICULTY RATING	TIME / DIST.	START POINT	MAP REF.	DISTANCE FROM APOLLO COAC
APOLLO BAY								
Great Ocean Walk	Wave your way through tall forests, coastal heathlands, beside wild rocky shores and along picturesque cliffs with amazing views. Hire an eight day pack along this incredible one direction walk from Apollo Bay to the Twelve Apostles. For more information visit: www.greatoceanwalk.com.au			Moderate	104km	Apollo Bay Foreshore	P8-P6	70km
Apollo Bay Foreshore Walk	Great footpath from Marengo through to Wild Dog Beach taking in the interesting wooden sculpture trail along the Apollo Bay Foreshore. Sculpture brochure available from the Visitor Information Centre. Many of the coastal walks below are part of this long distance walk.			Easy to Moderate	1 hr / 15.5km One way	Marengo Carpark	P18	3km
Marniers Lookout	Short but steep walk to lookout for spectacular views. No dogs, buses, caravans/campervans or camping. Please respect this private property.			Easy to Moderate	20 mins / 1km Return	Top of Marniers Lookout Road	P17	2km
Marengo to Shelly Beach	Follow low cliff tops overlooking the ocean and climb the exposed and aptly named Bald Hill. This walk takes you onto the beach and through sheltered forest, to picturesque Shelly Beach. Only take alternative coastal routes at low tide and during calm seas. For more information visit: www.greatoceanwalk.com.au			Moderate to Difficult	2 hrs / 4.70ms One way	Marengo Carpark	P18	3km
Shelly Beach Loop	Starting at the picnic area, descend towards Shelly Beach. Turn left at the Three Creeks junction and walk through coastal scrub taking in ocean views to Three Creeks Beach. If conditions are suitable, loop back around the point and access steps back onto the original track.			Moderate	45 mins / 2km Return	Shelly Beach Picnic Area via Elliot River Rd	O19	9km
Three Creeks Loop	A moderate grade walk featuring river, forest and ferns. Start from the carpark and follow the Elliot River Track down to the mouth of the Elliot River, crossing carefully on the stepping stones (please exercise caution as this area may flood after heavy rain). Climb up the ridge along the track, passing through stands of Blue gum and areas of tall Eucalypt forest. Return to Shelly Beach Picnic Area via the management vehicle track.			Moderate	1.5 hrs / 3km Return	Shelly Beach Picnic Area, via Elliot River Road	O19	79km
Elliot River Loop	Named after former forestry patrol officer Maitland Bryant, Mait's Rest has a short walk that meanders through a tranquil fern garden, past huge moss-covered trees. Some are up to 300 years old! A boardwalk protects the delicate ecosystem whilst providing visitors with a unique view of the forest. For more information visit: www.greatoceanwalk.com.au			Moderate	2 hrs / 4km Return	Shelly Beach Picnic Area, via Elliot River Road	O19	79km
Mait's Rest Rainforest Walk	Enjoy a 75-minute guided walk through the magical Otways bushland, where you'll discover lush tree fern gullies, eucalypt woodlands and spectacular ocean vistas. Your conservationist guide will share with you the secrets of the bush and the plants and animals who call the Otways home. www.wildlifewonders.org.au			Easy	30 mins / 1km Loop	Mait's Rest Carpark	N18	16km
Wildlife Wonders				Easy (1.4km alt. abseiling path)	The guided walk lasts 75 minutes.	475 Great Ocean Rd, Apollo Bay		5km

BEECH FOREST, LAVERS HILL

California Redwoods	A legacy of the Otways timber industry, a breathtaking forest full of Giant Californian Redwood (Sequoia trees) planted in 1936 originated from Northern California.			Easy	10 mins Return	Aire Valley Picnic Ground (near Birnie Road turnoff)	N16	45km
Beauchamp Falls	Walk passes through softwood plantation forest, along a river to discover magnificent Mountain Ash, Myrtle Beech, Blackwoods and lush ferns. Free camping area - Otway Forest Park with basic pit toilet facilities, picnic tables & fireplaces. Managed by DELWP call 1308186 or www.delwpvic.gov.au			Moderate to Difficult	1 hr Return	Beauchamp Picnic Area, Via Birnie Road	O16	45km
Hopetoun Falls	Walk to the viewing platform 20 metres from the carpark, or walk down stairs through glides of tree ferns to the falls.			Moderate	30 mins Return	Hopetoun Falls Reserve, Birnie Road	N16	45km
Beechy Rail Trail	Experience scenic forests, rich farmland, rolling hills & birdlife along the original path of the historic narrow gauge railway "The Beechy". For more information visit: www.colacotwycv.com.au			Moderate	49.2km One Way		N9-N15	-
Otway Fly Treelop Adventures	Please see the Otway Fly website for opening hours and fees (www.otwayfly.com). Discounted tickets are available via www.visitotwys.com and the Visitor Information Centres. Whether you're soaking up the breath-taking birds-eye view on the Treetop Walk or soaring through the leafy treetops on the Zipline Tour, there's something for the whole family to enjoy.			Easy to Moderate	1 hr / 2.5km Return	Otway Fly Carpark, Phillips Track	M16	45km
Triple Falls	Walk along scenic platforms through ancient rainforest to view the awesome triple escarpdes thundering over rock ledges. This walk also passes by an original sawmill site.			Moderate	1 hr / 2km Loop	Triple Falls Carpark, Phillips Track	M16	44km
Little Aire Falls	This walk leads off the Triple Falls track and passes through spectacular rainforest along an old logging witch line.			Moderate	2.5 hrs / 2.5km Return	Triple Falls Carpark, Phillips Track	M16	44km
Melba Gully	A stunning loop walk through dense rainforest of Myrtle Beech, Blackwood and tree ferns alongside a bubbling creek. The best Glow Worm night viewing in the area.			Moderate	35 mins / 1.2km Loop	Melba Gully Carpark	K17	58km
Gable Lookout	This great short walk, through coastal heath, woodland and thick Casuarina forest before arriving at a lookout with spectacular views of some of Australia's highest sea cliffs. For more information visit: www.greatoceanwalk.com.au			Easy	20 mins / 800m Return	The Gables Carpark Via Moonlight Head Rd	H18	71km
Wreck Beach	Descending over 300 steps from carpark area, turn right once on the beach. Explore the beach, rock ledges and the anchors of the Marie Gabrielle & Fiji shipwrecks when tide and sea conditions are suitable. For more information visit: www.greatoceanwalk.com.au			Difficult	90 mins / 2km Return	Wreck Beach Carpark via Moonlight Head Rd	H18	71km

BEEAC, BIRREQUIRA, COLAC, CRESSY

Beeac Heritage Walk	Discover historic churches, buildings and businesses in the quaint village of Beeac. A highlight includes the Beeac Windmill Park commemorating the area's agricultural heritage. Pick up a guide from the Visitor Information Centre.			Easy	15 hrs Return	65 Main St, Beeac	O6	83km
Biregura Heritage Walk	Discover historic churches and buildings in the scenic Biregura township. Other highlights include the towns timber industry and sporting historical connections.			Easy to Difficult	35min / 1.7km Return or 80mins / 3.4km Return	Biregura Public Carpark	Q9	20km
Colac Botanic Gardens	A leisurely stroll through 12 hectares of one of Victoria's most unique regional gardens, with stunning views of Lake Colac. Botanic cafe is open from 10am.			Easy	15 mins / 1.2km Return	Main Entrance, Gallibrand Street	N9	70km
Cressy Discovery Trail	A traditional ocean town. Wander through this historical farming town settled in the 1830's with quaint churches and strong links to the old Victorian Railways.			Easy	1 hr Return	Community Hill, Cressy	O3	102km
Lake Colac Foreshore	One of Victoria's largest fresh water lakes, this walk includes shared & informal paths taking in the Lake Colac Bird Reserve along the southern foreshore of Lake Colac.			Easy	15 hrs / 6km Loop	Lake Colac Bird Reserve, Church Street	N9	70km
Red Rock Scenic Lookout	A ground-level viewing platform or a short stair climb to the top of a dormant volcanic crater complex, on a clear day you can see Lake Congarrange - Australia's largest permanent saline lake.			Moderate	15 mins Return	Red Rock Volcanic Scenic Lookout	M7	85km

CAPE OTWAY

Blanket Bay to Parker Hill	A diverse walk through coastal forests and grass trees, in and out of gullies before descending to beautiful Parker Inlet. Two lookouts along the way provide wonderful ocean and estuary views. For more information visit: www.greatoceanwalk.com.au			Moderate	2 hrs / 4km One way	Blanket Bay Campground	N19	30km
Cape Otway Lightstation	From the deck of the 1848 lighthouse experience the heart pounding thrill and awe-inspiring views 80m above the Southern Ocean. Please see the Lightstations website for opening hours and fees (www.light.com). Discounted tickets are available via www.visitotwys.com and the Visitor Information Centres.			Easy	45 mins / 1km Return	Lighthouse Precinct via Otway Lighthouse Rd	M20	30km
Lightstation Cemetery & Lookout	From the lightstation carpark follow the gravel footpath west for approx 10 min to Pymtens Hill for a distant view of the lighthouse. Continue over the hill and off to the right for about another 10 min to explore the cemetery.			Easy	40 mins / 2.8km Return	Cape Otway Lightstation Carpark	M20	30km
Aire River Escarpment Lookout	From the Aire River Bridge follow the track through the coastal scrub to the Lookout for spectacular views over the heritage listed river mouth and wetlands.			Moderate	2 hrs / 4.2km Return	Aire River bridge via Hardern Vale Rd	L19	28km

FORREST

Forrest History Walk	This Otways township enjoys a rich history of the timber and agriculture industries. The walk is lined with 27 interpretative plaques dotted around the town.			Moderate	1 hr / 2km Return	Forrest Township	P13	38km
Lake Elizabeth	The one hour return walk ambles alongside the river and a billabong to the lake or an extended two hour walk loops the entire lake. A colony of platypus resides here, tread lightly and you may see some.			Easy to Moderate	1 hr - 2 hrs 2-4km Return	Lake Elizabeth Carpark via Kiangling Rd	Q14	38km
Tiger Rail Trail	The Tiger Rail Trail is an easy ride and beautiful walk that passes through rich fertile farm lands and spectacular forest.			Easy	1 hr / 2hrs 5km Return	Forrest Township	P13	38km
West Barwon Reservoir	Take a cool climate rainforest walk or take the path from the picnic area and explore the waterways. Excellent views from the dam wall over the reservoir.			Easy	20 mins / 400m Return	West Barwon Reservoir	P13	38km
Stevensons Falls	A 1.5 hr return (4.6km) walk from campground, or shorter walk return (500m) available from day car park via second bridge. Free camping area - Otway State Forest with basic pit toilet facilities, picnic tables & fireplaces. Managed by DELWP call 1361886 or www.delwpvic.gov.au			Easy	20 mins / 1.5 hrs Return	Stevensons Campground, Upper Gallibrand Rd	O14	44km

KENNETT & WYE RIVER

Kennett River Nature Walk	Reconnect with nature on this self-guided walk along the banks of the Kennett River. Learn about local wildlife and history, and spot native birds and animals, including kangaroos in the early morning and at dusk.			Easy	20 mins / 400m Return	Kennett River Picnic Area	S16	22km
Grey River Road Rainforest Walk	Loose yourself amid the towering trees on the short rainforest walk from the bridge, or visit in the evening to see the enchanting glow worms come to life on the roadside embankments near the picnic area.			Easy	1 hr / 1km Return	Grey River Picnic Area	S16	22km
Jamieson Creek Walking Track	Jamieson Creek walking track meanders along the coastline between Jamieson Campground and Separation creek, crossing several gullies in the process. This walk offers multiple panoramic views of the Southern Ocean and coastline as it winds through regenerating coastal bushland. Heavily vegetated with Prickly Moses, blue gums and several species of wattle, walkers can expect to see many endemic bird species, wallabies, lizards and snakes.			Moderate	2.5hrs one way / 5.5hrs one way	Ether-Jamieson Creek Campground or Separation Creek, departing from Olive St.	T15	28km
Wye to Sep Walk and Paddy's Path	Enjoy the rock ramble and see the historic cement tram rails, see the 3 large rock pools at low tide. Return via Paddy's Path, the old timber route, with picturesque views over Wye River and Separation Creek.			Easy to Moderate	40 mins / 2km Return	Wye River Foreshore Picnic Area	T15	28km
The Wye River Walk	Take in the sights and sounds of the Wye River as you meander along its bank from the playground near the general store to the river crossing beyond the Big 4 Caravan Park. Spot native birds and wildlife on this short, easy walk. Note that dogs are not permitted.			Easy	40 mins / 2km Return	Playground next to Wye River General Store	T15	28km
Carisbrook Falls	Walking track leaves the carpark and heads upward along the eastern side of the gorge with views of the Carisbrook Creek, leading to a viewing area giving excellent views of the falls.			Easy to Moderate	20 mins / 1km Return	Carisbrook Falls Carpark	R16	12km



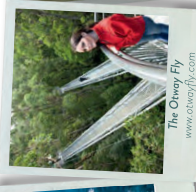
Great Ocean Walk
www.greatoceanwalk.com.au



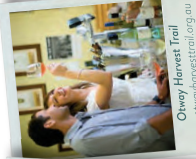
Mait's Rest
www.parks.vic.gov.au



Cape Otway Lightstation
www.lightstation.com



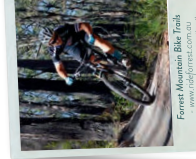
The Otway Fly
www.otwayfly.com



Otway Harvest Trail
www.dairyharvesttrail.org.au



Triple Falls
www.parks.vic.gov.au



Forest Mountain Bike Track
www.delwpvic.gov.au



Lake Elizabeth
www.parks.vic.gov.au



Toilets & Information



Dogs on Leads Shelter



Picnic Table



Wood BBQ



Electric or Gas BBQ



Cycling



Camping



Fishing



Gift Shop

Sudden weather changes are common. Carry all weather clothing. - Check tide times for coastal walks. - Consider carefully whether to bushwalk on days of Total Fire Ban. - Mobile phones are frequently out of range. - Respect the environment, stay on marked paths. - Advise someone of your destination and estimated time of return. - Allow plenty of time - winding roads can double your drive time. - Some roads are travelled by large log trucks from November to May.